



BALANCE 442

Shipyard: Balance Catamarans
Model : Balance 442
Draft : 1.15 m/2.15 m
Material: GRP E-Glass
Year : 2022

Engines: Yanmar 2x40 HP
Length: 13.50 m
Beam: 7.60 m
Cabins: 3 DBL
Price : \$1,179,000

Equipment & Layout of this Balance 442 Owner's Version:

2 x Yanmar 3JH 40HP engines (1100h), Electronic controls VC20, 2 x Bruntons Varifold 3-blade folding propellers 18" x 15", Fuel tanks: 2 x 400L

Starboard Owner's Hull:

Large owner's cabin with king-size bed, drawers, and hanging lockers, Frigomar 10,000 BTU reversible air conditioning, Wide step to bed with internal storage, Large forward storage compartment, Oceanair blinds on windows, Owner's en-suite with washbasin, separate large shower, freshwater electric toilet

Port Guest Hull:

Aft cabin with queen-size bed, hanging lockers, multiple drawers, Frigomar 10,000 BTU reversible air conditioning, Spacious forward cabin with double bed, large under-bed drawer, hanging lockers, multiple drawers, storage shelves, Frigomar 10,000 BTU reversible air conditioning, Oceanair blinds, Generous headroom, washbasin, separate shower, Freshwater electric toilet, very large forward storage compartment

Saloon:

Height-adjustable table on 2 telescopic legs, convertible into a bed, Spacious rectangular saloon, Navigation table with 360° visibility, Numerous drawers and storage compartments, 2 x forward bay windows with hatches, External salon window shades, Frigomar 16,000 BTU reversible air conditioning

Galley:

Corian galley with ample storage, Oceanair blinds, Induction cooktop & microwave, Oven, fridge, freezer

Cockpit: Flush with the salon, sliding glass door, Seating cushions (seats and backrests), Daybed mattress, Cockpit table on 2 telescopic legs (convertible into a bed), Cockpit refrigerator, Cockpit enclosures (wind and rain protection), Fishing rod holders, surfboard supports, VersaHelm™ steering station

Sails & Rigging: Sparcraft mast, Dyform standing rigging, Canoe boom, Full-batten square-top mainsail (Ullman ADSL tri-radial grey laminate - NEW) with Sunbrella lazy bag, Solent (Ullman ADSL tri-radial Grey laminate) with Sunbrella UV strip, Asymmetric spinnaker, Gennaker hardware, Spinnaker hardware, 5 x Harken electric winches

Plumbing: Spectra Z-ION 54 L/H 12V watermaker, Freshwater tanks: 2 x 350L, Black water tanks: 2 x 40L, Deck wash connected to freshwater system, Hot/cold aft deck shower, Samsung washer-dryer

Electronics: Raymarine system, AXIOM 12 Pro plotter + AXIOM 12+ plotter, Quantum Doppler radar, 2 x i70s displays, Raymarine autopilot, AIS700, VHF / dual CAM220 cameras, Navigation center with depth sounder, speed log, wind sensor, EPIRB Ocean Signal SafeSea PRO

Electrical System: Integrel system 2 x 9KW, Lithium house battery bank: 800Ah 24V, Victron 5kW charger/inverter, 400W solar panel, Shore power inlet, Underwater lighting

Deck Equipment: Viking 6-person ISO-certified liferaft, Primary anchor: Rocna 25 with 50m chain, Secondary anchor: Fortress FX37 with full rope rode, AST tender (3.4m) + 15HP electric-start outboard, Davits



MultiHull

GSM +33 (0)6 51 81 96 33

Email: multihull@outlook.com

Site Web: www.multihull.fr



MultiHull

GSM +33 (0)6 51 81 96 33

Email: multihull@outlook.com

Site Web: www.multihull.fr

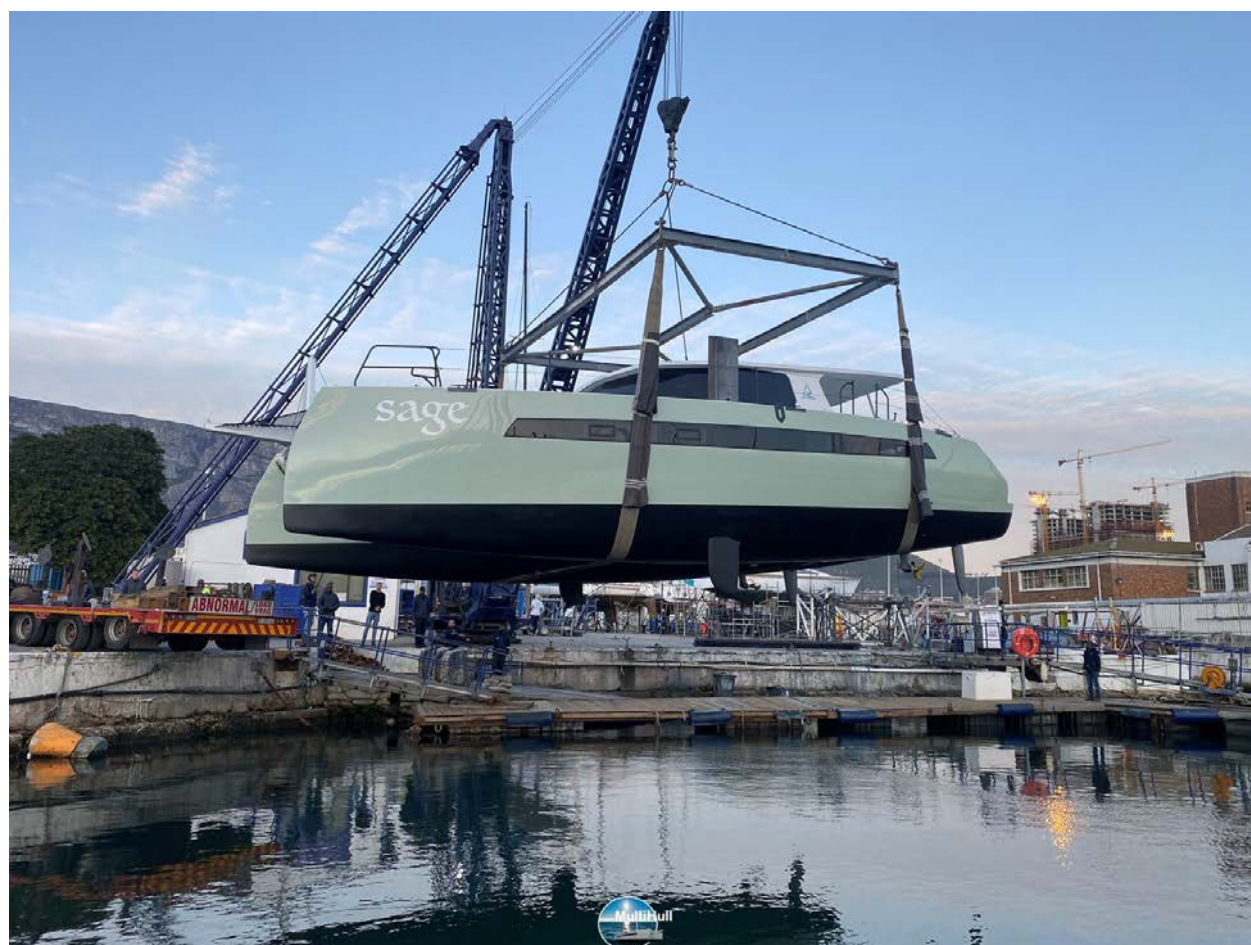


MultiHull

GSM +33 (0)6 51 81 96 33

Email: multihull@outlook.com

Site Web: www.multihull.fr

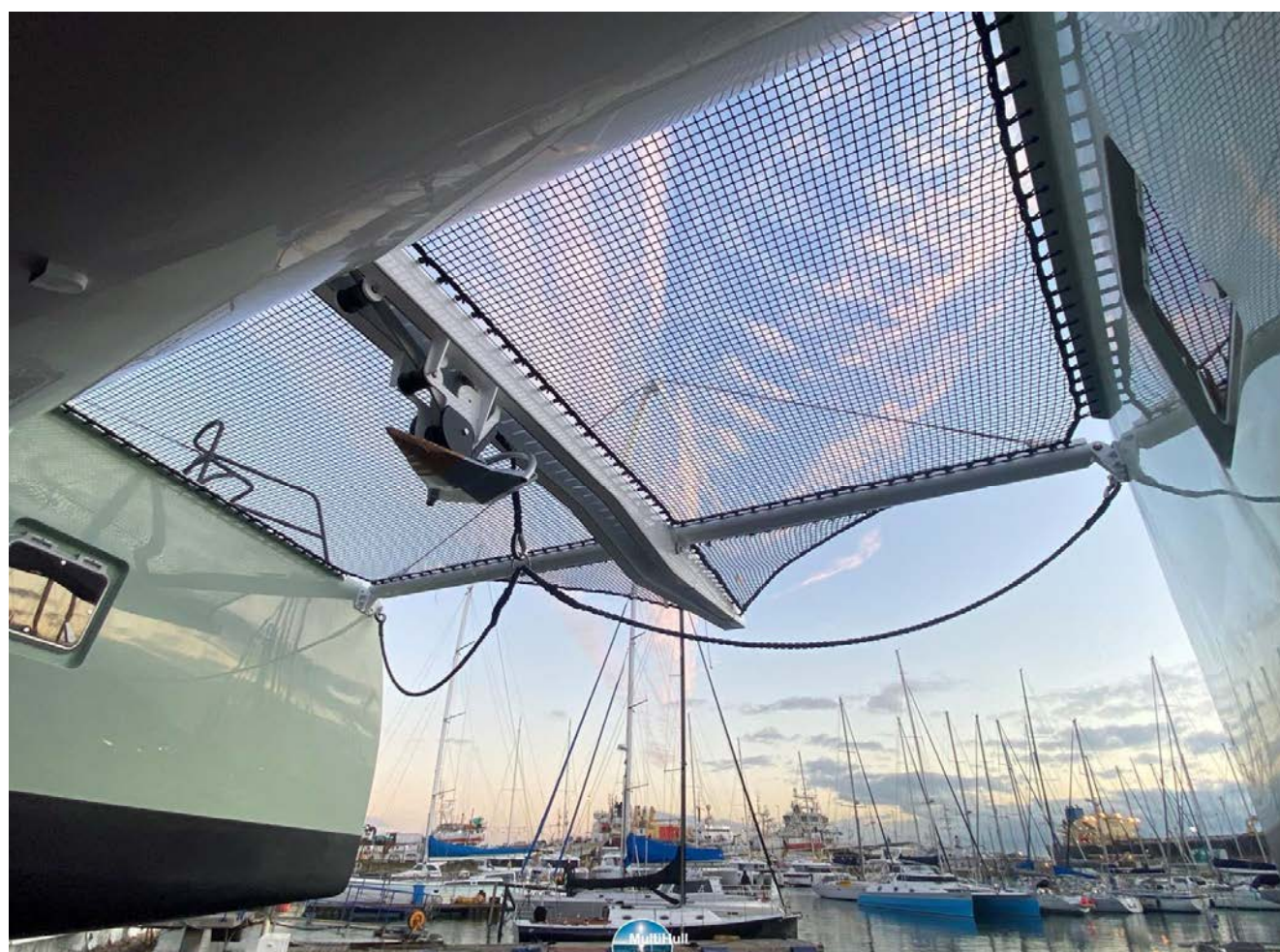


MultiHull

GSM +33 (0)6 51 81 96 33

Email: multihull@outlook.com

Site Web: www.multihull.fr



MultiHull
GSM +33 (0)6 51 81 96 33
Email: multihull@outlook.com
Site Web: www.multihull.fr