

CATANA 53

Shipyard:	Catana Catamarans	Engine:	Volvo 2x75 HP
Model:	Catana 53	Length:	16.15m
Draft:	1.48/3 m	Largeur:	8.65 m
Material:	GRP	Cabins:	3 DBL
Year:	2018	Price:	\$1550000 US Tax Paid

Equipment of this Catana 53: Engines 2xVolvo 75 HP, Folding three-blade propellers, 3 electric engine controls (2 Helm+ Chart Table)

Layout: Owner's version CARBON-INFUSION (3 cabins, 3 heads).

Large Owner's Cabin with spacious private bathroom, shower, 2 sink, separate toilet. Integrated washer-dryer

Fans, Reversible water-cooled WEBASTO air conditioning with 5 separate zone and individual regulation

Galley: Corian galley with central island, Stainless steel fridge 2 drawers 180L, Stainless steel freezer 2 drawers 180L, Wine cellar, 4-burner stove, Gas oven, Stainless steel double sink.

Sails and rigging: Incidence Full Batten 3 Reef mainsail, North Sails genoa, North Sails Screecher, Asymmetric spinnaker, 2 Electric genoa winches, second electric winch for main sheet port with double switch, Gennaker rigging, Spinnaker rigging.

Electronics: Raymarine GPS Radar Chartplotter Axiom 12" in chart table, 2 Raymarine GPS Radar Chartplotter Axiom 9" GPS (Helms), 2 Raymarine Autopilot, Raymarine Navigation system (Log/depth sounder/wind vane) Raymarine VHF, Radar, Hewlett Packard computer (Chart Table), Stereo with 4 speakers, Wi-Fi antenna, 43' TV on electric lift + remote + antenna

Electricity: 110 V installation and 220/240-volt dockside connections, Onan 7 KVA generator in 220 V/50 Hz at 1500 rpm, soundproof cocoon and water/gas separator exhaust for silent operation, LG 800-watt solar panels, 8 x 24 V batteries, 3KW inverter charger, Reversible water-cooled WEBASTO air conditioning with individual regulation. 6 Fans, 2 engine start batteries, 1 Generator start battery.

Plumbing: Spectra Newport 1000 watermaker - 400 liters/hour with remote digital control panel,

Deck: Cockpit upholstery, large cockpit bed with cushions and storage, Cockpit tent, White Batyline curtains, Safety equipment for 8 people, Mooring kit (6 fenders and 4 lines), Pleated blinds (salon + floats), Wheel covers, Tricolour masthead light Optolamp auto, 2 Primus Silent X wind turbine, 8 persons Liferaft with automatic release, Highfield Classic 350 dinghy with European steering station and 25 HP Yamaha engine...

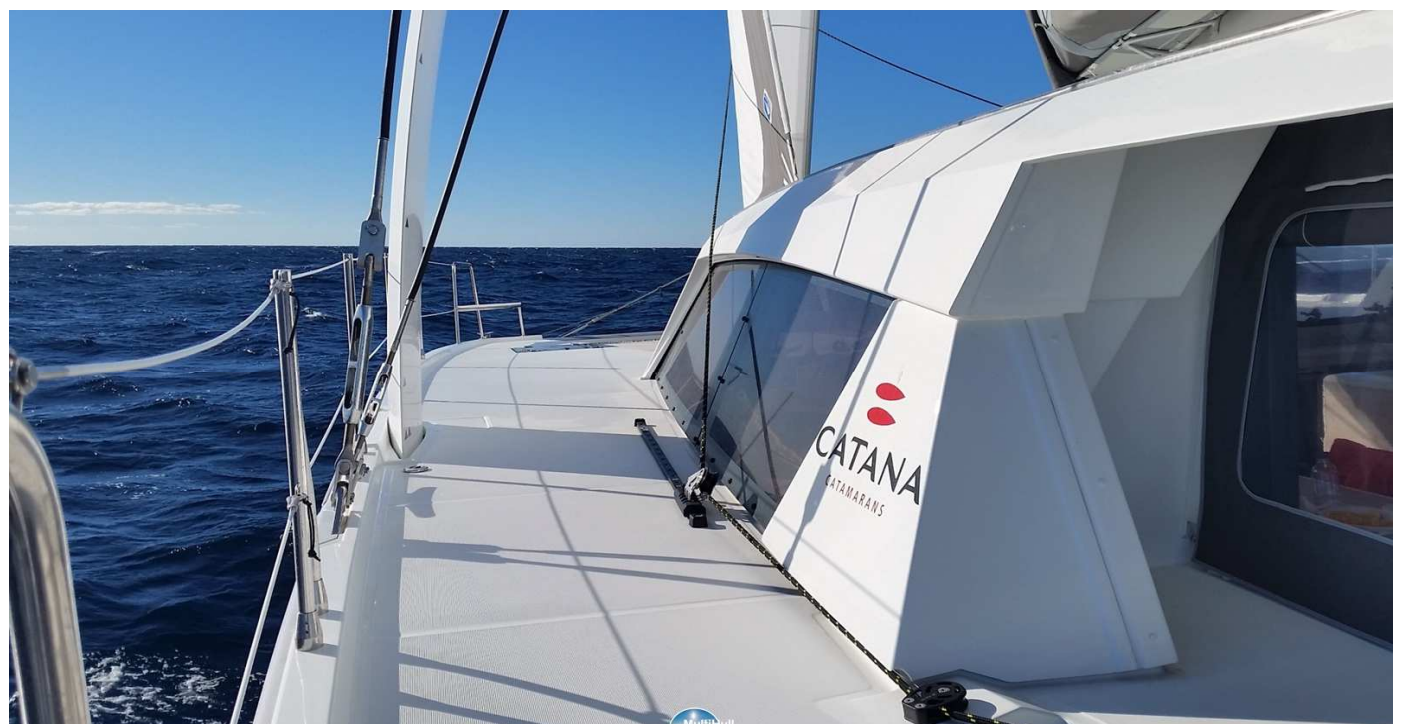
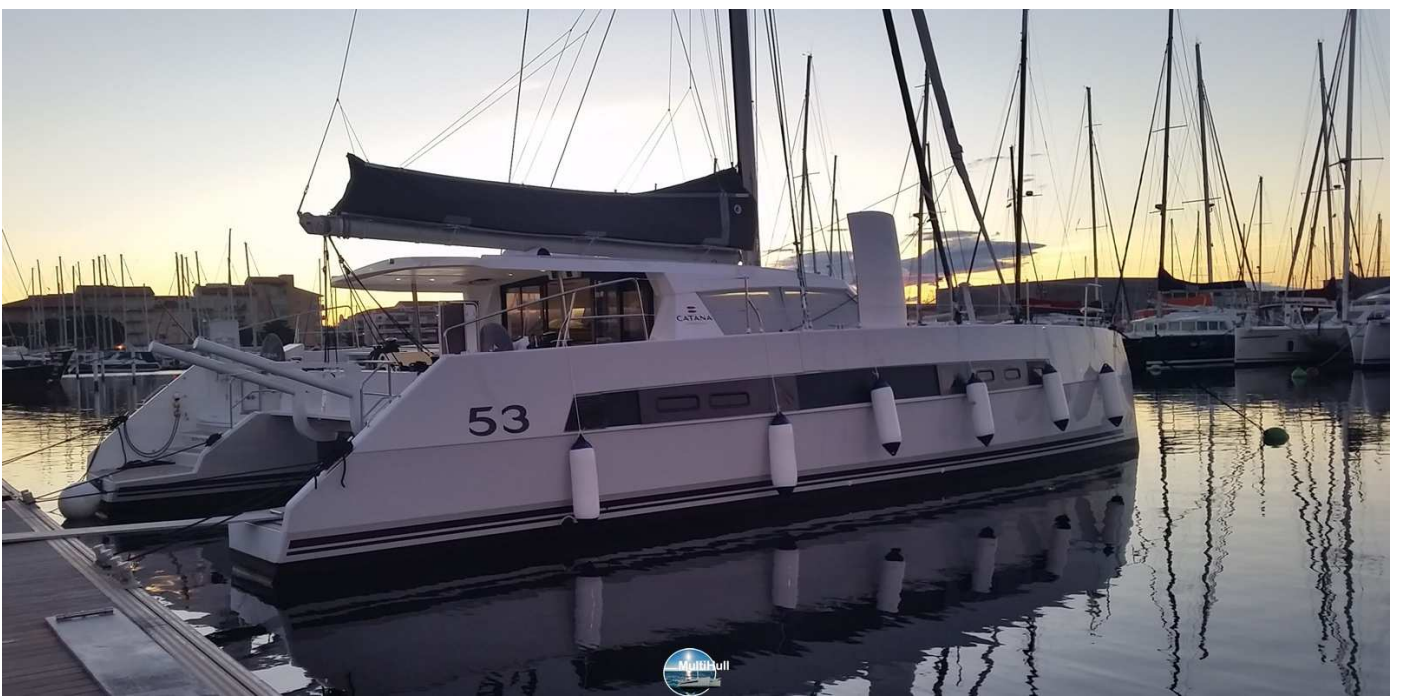


MultiHull

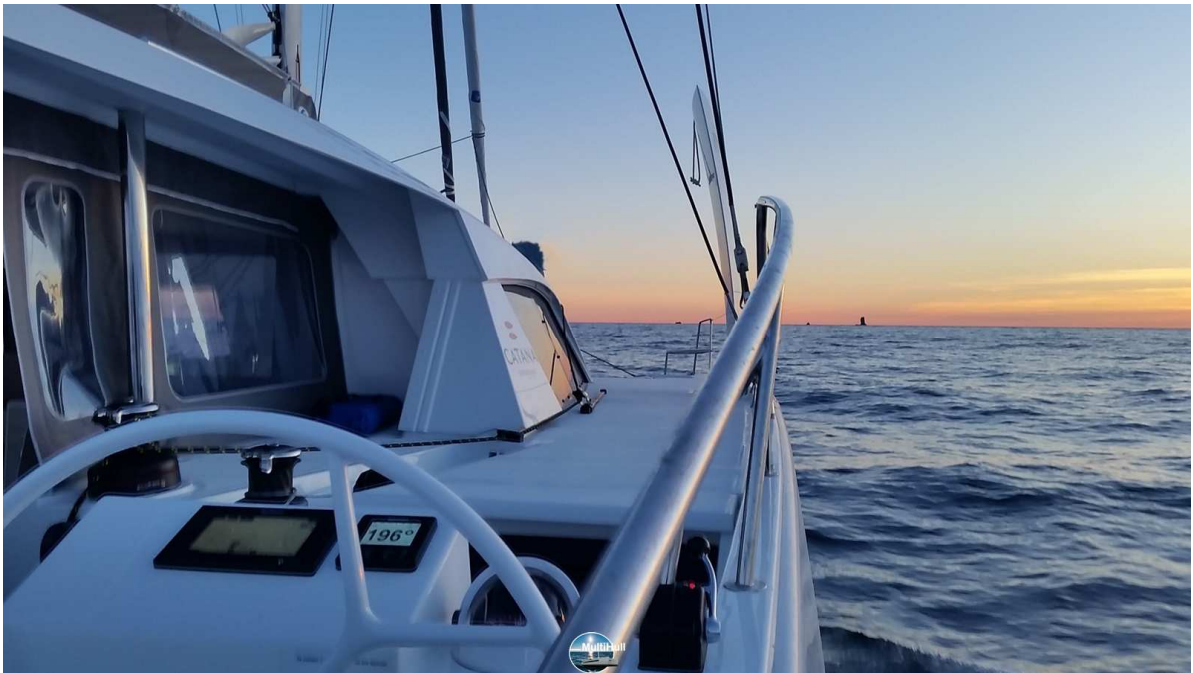
GSM +33 (0)6 51 81 96 33

Email: multihull@outlook.com

Site Web: www.multihull.fr



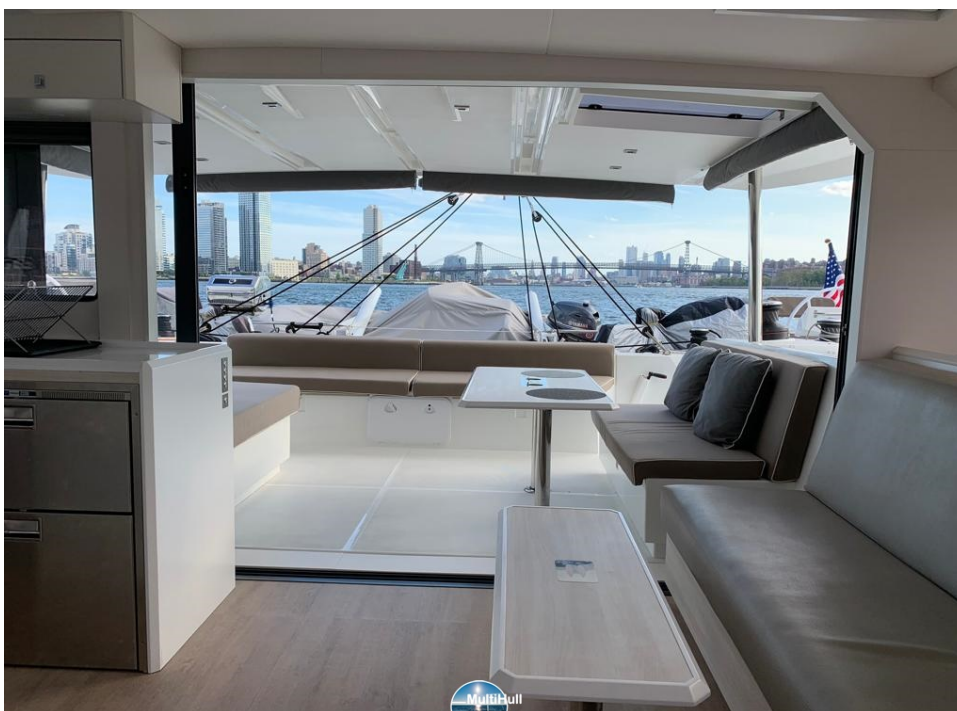
GSM. +33 (0)6 51 81 96 33
Email: multihull@outlook.com
Site Web: www.multihull.fr



GSM. +33 (0)6 51 81 96 33
Email: multihull@outlook.com
Site Web: www.multihull.fr



GSM. +33 (0)6 51 81 96 33
Email: multihull@outlook.com
Site Web: www.multihull.fr



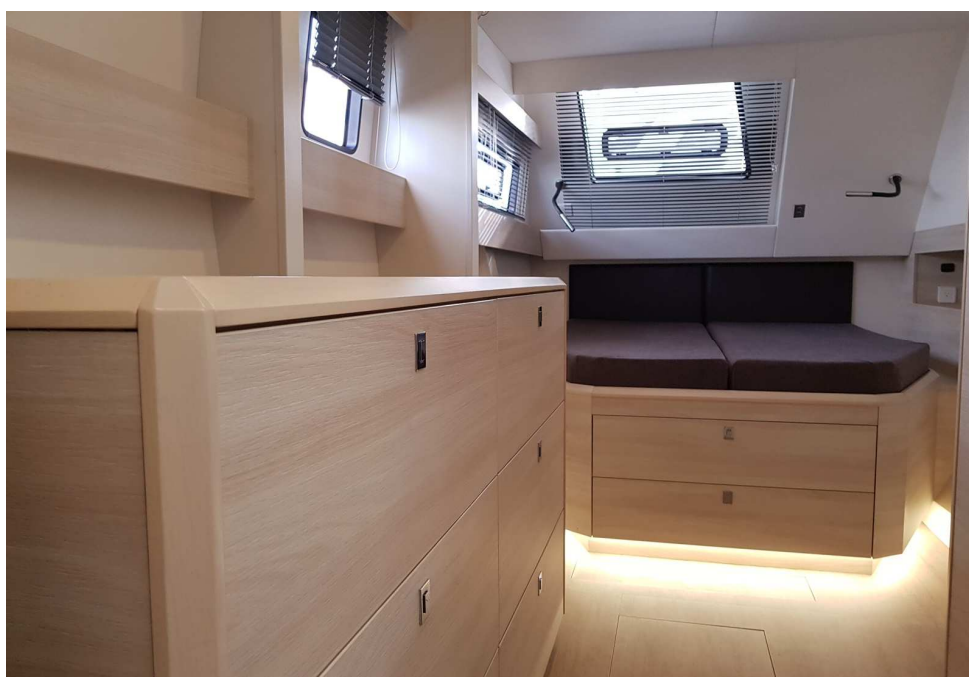
GSM. +33 (0)6 51 81 96 33
Email: multihull@outlook.com
Site Web: www.multihull.fr



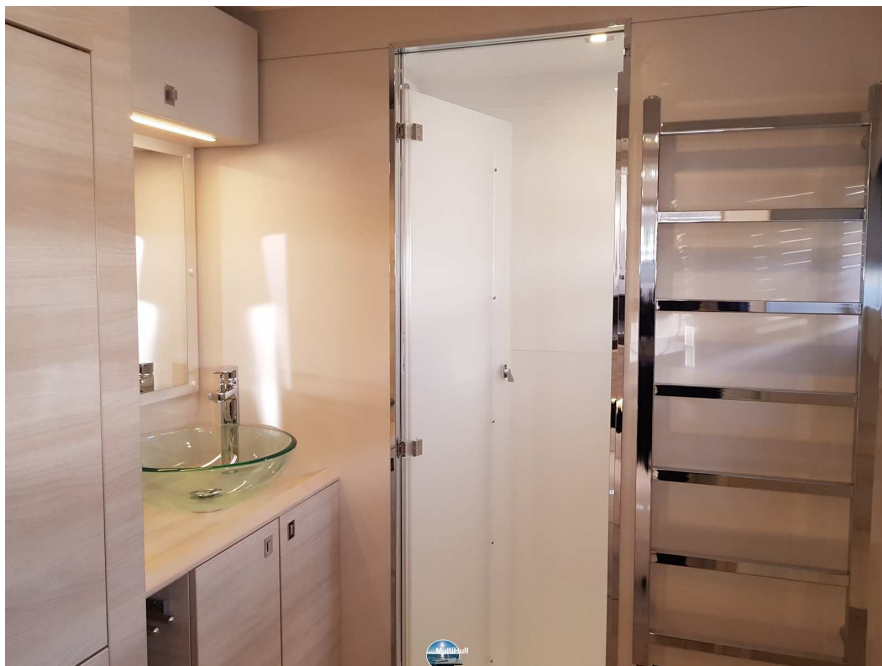
GSM. +33 (0)6 51 81 96 33
Email: multihull@outlook.com
Site Web: www.multihull.fr



GSM. +33 (0)6 51 81 96 33
Email: multihull@outlook.com
Site Web: www.multihull.fr



GSM. +33 (0)6 51 81 96 33
Email: multihull@outlook.com
Site Web: www.multihull.fr



GSM. +33 (0)6 51 81 96 33
Email: multihull@outlook.com
Site Web: www.multihull.fr