



LAGOON 380 Owner's Version

Type:	Catamaran	Engines:	Volvo 2x27 HP
Shipyard:	CNB	Architect:	Van Peteghem/Prevost
Model:	Lagoon 380 Owner's Version	Length:	11.50 m
Draft:	1.15 m	Beam:	6.50 m
Material:	Polyester	Cabins:	3 DBL
Year:	2001	Price:	210 000 € VAT PAID

Equipment of this Lagoon 380 owner's version: Engines: Volvo MD2030 2x27HP, Saildrive seal replacements in 2021, Engine service in 2023, Diesel tanks: 2x100L, Engine batteries (2022/2023)

Layout: Owner's Version propriétaire – 3 double cabins/2 shower/2 Head

Starboard hull: large owner's cabin with a mattress from 2020, desk, spacious private bathroom with a separate shower

Port Hull: 2 double cabins – 1 shower/toilet

Galley: Fridge, Candy 34L Freezer (2020), ENO stainless steel 2-burner oven/stove, Double stainless-steel sink

Sails and rigging: Forestay and shrouds from 2021, Self-tacking jib and martingale from 2021, Full Batten Main Sail 2023, Genoa 2015 (revised in 2023), Gennaker 2020 (revised in 2023), Gennaker rigging 2020, Gennaker sheet blocks 2023, 2 Harken winches 45, Lazy-Bag (revised in 2023), Wind vane/anemometer 2021, Masthead sheaves 2023.

Electronics: ST6000 Autopilot, ST60 Wind, ST60 Tridata, RL70C Radar, AIS transmitter/receiver (2021), Navicom RT550 ASN VHF (2015) + portable VHF, NMEA2000/NMEA183/SeaTalk/Wi-Fi Multiplexer (2020), Raymarine ITC-5 Converter (2021), Dedicated laptop, Raymarine ITC-5 Converter from 2021, Ocean Signal EPIRB beacon 2023 (valid until 2033)

Electrical: Service batteries: 2x230Ah AGM Deep cycle (2023), 2x360W Victron solar panels (2021) (with stainless steel supports from 2021), Victron MPPT 150/60 Regulator, Victron Smartshunt 500A Monitor, Victron Phoenix 2000VA Inverter, All Victron devices are Bluetooth-connected and can be controlled via the Victron Connect app, Full LED lighting, LED anchor light (2021), NMEA183/2000 Multiplexer (2020), Victron 500A Shunt (2021), Victron MPPT (2021), 220V shore power outlets

Plumbing: Water tank: 330L, SeaWaterpro 65LPH Watermaker (2020), Blackwater tank in the starboard hull, Mini Daewoo 3kg Washing Machine (2020), Water pump (2023)

Deck: Electric Cayman 1000W Windlass (2021), Spade anchor + 2 secondary anchors, 78m of 10mm chain (2020), High-sea Bombard 6-person liferaft from 2014, revised in 2021, Cockpit cushions (2021), Curtains from 2020, Teak cockpit floor (2021), Gratings (2021), Sunshades (2021), 2020 helm seat, 2021 windshield

Miscellaneous: Plastimo MX310 Hypalon double-bottom aluminum dinghy (2020), Yamaha 6HP Outboard Motor (2020), Gangway, High-sea safety equipment, serviced, TRUEDESIGN valves and through-hull fittings (2021), Southco hatch closures (2021), Full cockpit enclosure with removable mosquito nets (2023), Replacement of seals and glazing for opening hatches (LEWMAR) on the deck and in the saloon (2023), Complete hull maintenance and polishing (2023)



MultiHull

GSM +33 (0)6 51 81 96 33

Email: multihull@outlook.com

Site Web: www.multihull.fr



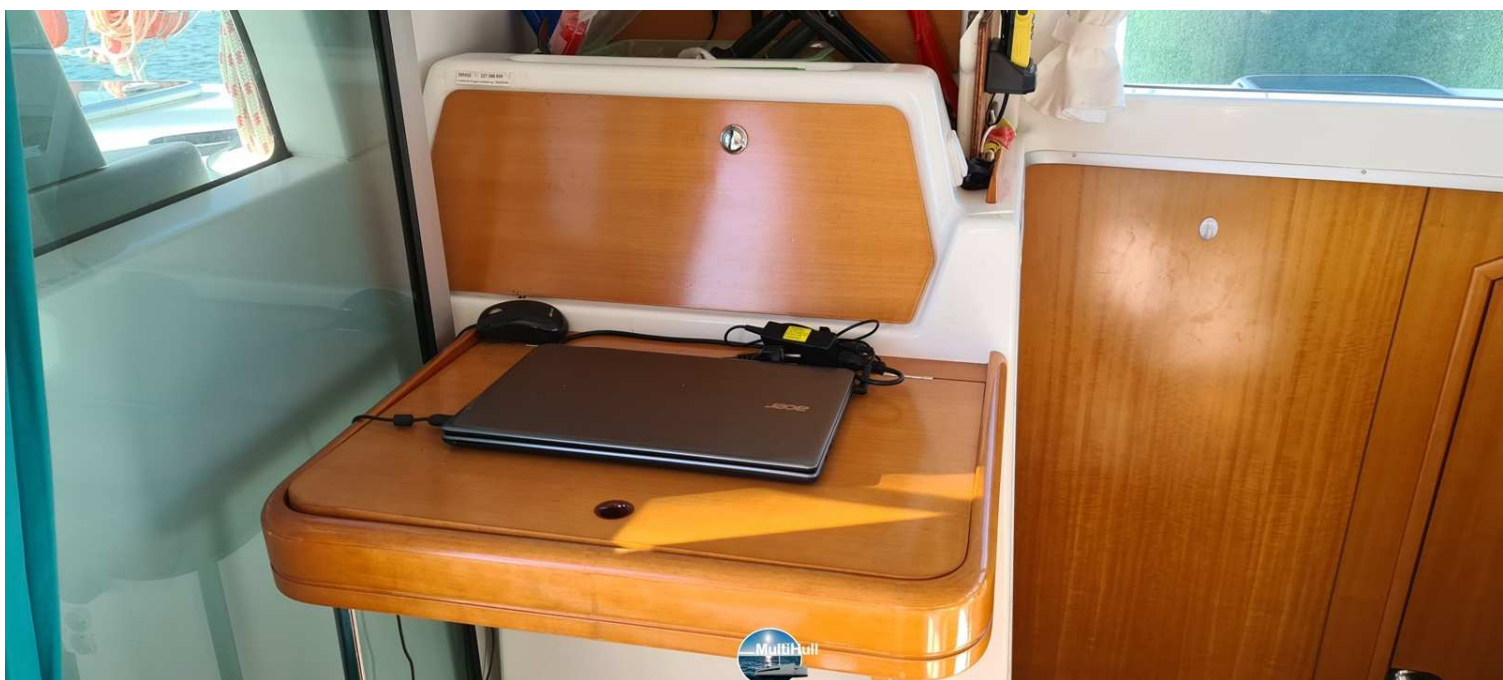
GSM. +33 (0)6 51 81 96 33
Email: multihull@outlook.com
Site Web: www.multihull.fr



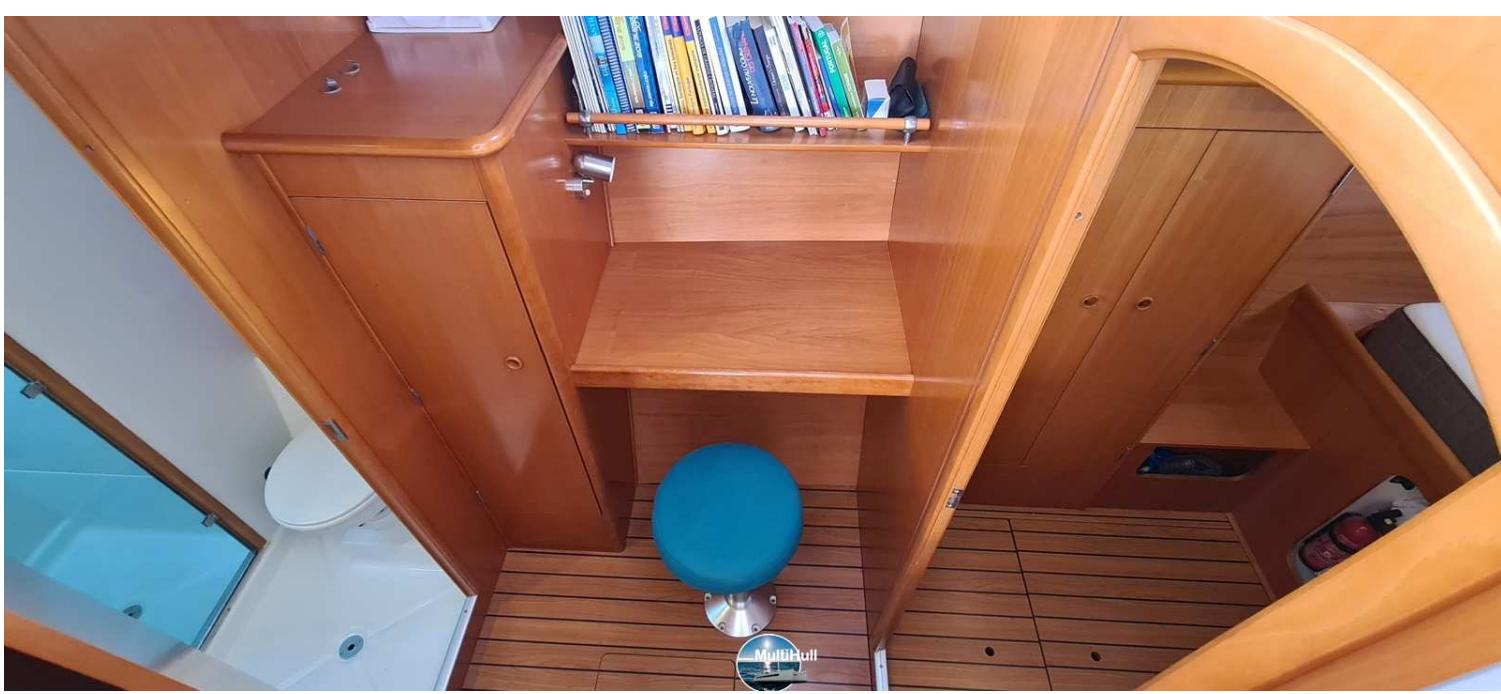
GSM. +33 (0)6 51 81 96 33
Email: multihull@outlook.com
Site Web: www.multihull.fr



GSM. +33 (0)6 51 81 96 33
Email: multihull@outlook.com
Site Web: www.multihull.fr



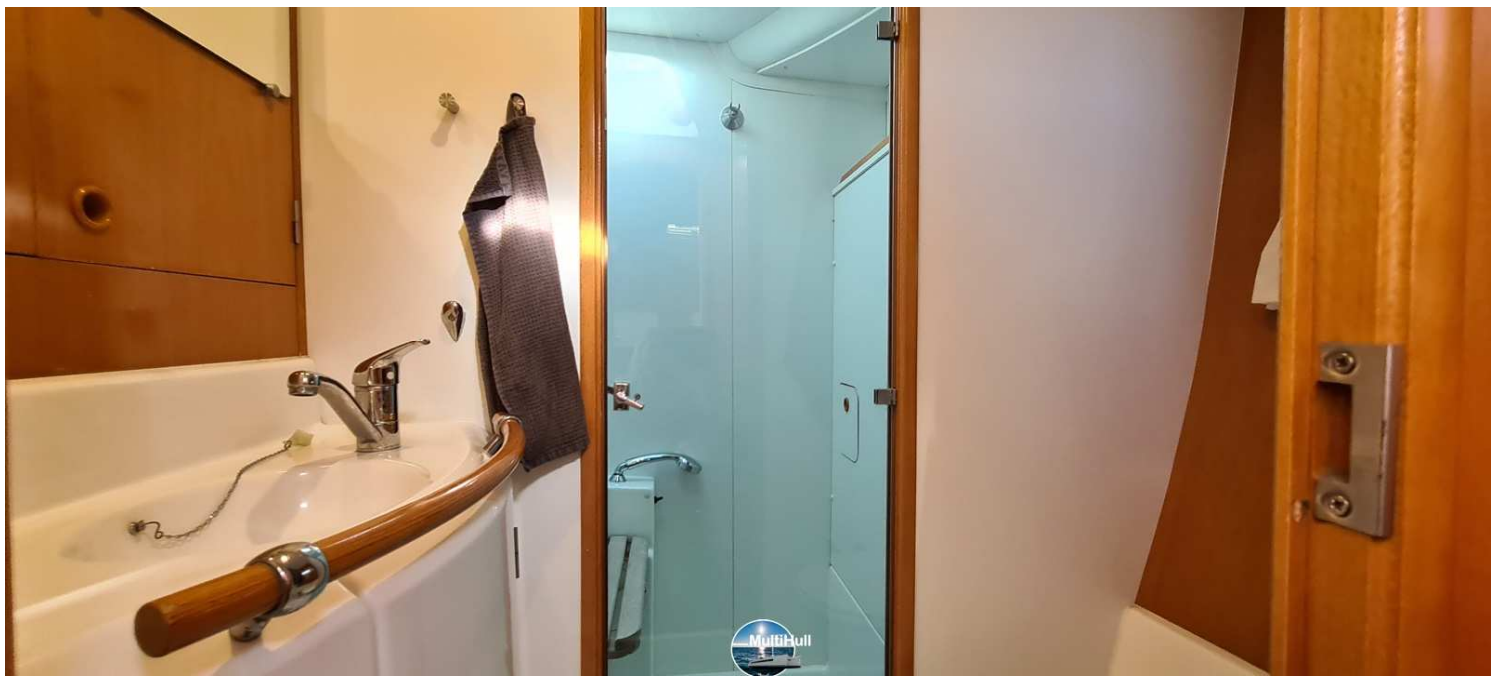
GSM: +33 (0)6 51 81 96 33
Email: multihull@outlook.com
Site Web: www.multihull.fr



GSM. +33 (0)6 51 81 96 33
Email: multihull@outlook.com
Site Web: www.multihull.fr



GSM. +33 (0)6 51 81 96 33
Email: multihull@outlook.com
Site Web: www.multihull.fr



GSM. +33 (0)6 51 81 96 33
Email: multihull@outlook.com
Site Web: www.multihull.fr



GSM. +33 (0)6 51 81 96 33
Email: multihull@outlook.com
Site Web: www.multihull.fr