



NEEL 47



Shipyard:	Neel trimarans	Engine:	Volvo 60 HP
Model :	Neel 47	Length:	14.20 m
Draft:	1.60 m	Beam:	8.30 m
Material:	Composite sandwich infusion	Cabins:	3 DBL + 2 SGL
Year:	09/2019	Price:	680 000€ VAT Paid

Equipment of this Neel 47 Performance: Volvo D2-60F Sail drive engine (370 Hours), Folding propeller, 300L fuel tank.

Layout: *Central hull:* Owner's cabin on one level, Bathroom with separate freshwater shower and electric toilet, *Port float:* Double cabin with ensuite bathroom and toilet + Single cabin forepeak, *Starboard float:* Double cabin with ensuite bathroom and toilet + Single cabin forepeak. "Premium" package, Curtains in the cabins, 1 electric fan, Sliding Bay entrance curtains, Exterior blackout blinds for windows, Slatted bed base for 1 cabin, 43,000 BTU centralized reversible chilled water air conditioning in 3 cabins + saloon/air recycling with integrated boiler.

Galley: 6-place dishwasher, Built-in microwave oven, Double stainless-steel sink, Eno oven, 2-burner gas stove, numerous additional storages.

Sails and Rigging: Performance rigging, Painted carbon mast, Painted aluminum boom, Hydranet full-batten mainsail on ball bearing cars, Hydranet genoa on furler with stainless steel Monotoron forestay with UV strip, Self-tacking Hydranet staysail on removable furler with UV strip, Lazy bag, Electric winch for mainsail halyard and reefing lines, Deck hardware for spinnaker + 3 winches, 150m² asymmetric spinnaker with Sock.

Electronics: 280W FUSION MS AV 750 DVD/CD/Bluetooth/Ethernet/HDMI audio system - 4 speakers, B&G electronics package including 1 x ZEUS 3 12" multifunction display with integrated Gofree, 1 Navionix Gold Excell 9 chart card, 2 Triton instruments (log-sounder-windvane-anemometer), USB port for computer tracking, Gyro autopilot with rudder angle sensor and 2 control stations, VHF V50 AIS (receive) with cockpit handset, Additional 12" ZEUS 3 display at navigation table, AIS transceiver, GLOMEX Web Boat antenna installed.

Electrical System: 220V network, 11 x 220V outlets + 25m shore power line, 230V/12V 60A shore charger, 230V/12V 5000W power inverter, 1 set of 12V gel service batteries totalling 480AH, 1 12V 70A Optima starting battery, LED interior lighting, LED navigation lights, ONAN 11KVA 220V/50HZ generator, 5 SOLBIAN solar panels on foredeck and port and starboard sides totalling 560W, 1 USB port.

Plumbing: Blackwater tanks, Pressurized seawater at kitchen faucet and exterior deck wash with independent pump, Aquabase 12V watermaker with 105 L/H flow rate, adjoining washing machine in central hull.

Deck : 12V electric windlass (Windlass control and chain counter at helm station), Swim ladder and hot/cold shower on port float transom, Cockpit cushions, Kit with 4 mooring lines + 6 fenders, 12V bow thruster with dedicated battery and charger, Roof mattresses, Helm station console protective cover, 1 cockpit seat, Dinghy lifting halyard, Removable cockpit tent, Fixed Bimini at helm station with stainless steel structure, Bimini tent with removable soft windshield, Safety equipment for 8 passengers according to French standards, 8-person life raft in container, HIGHFIELD 3.1m Classic Aluminum/Hypalon dinghy with 20 HP Suzuki electric start outboard motor.



MultiHull

GSM **+33 (0)6 51 81 96 33**
Email: multihull@outlook.com
Site Web: www.multihull.fr



GSM. +33 (0)6 51 81 96 33
Email: multihull@outlook.com
Site Web: www.multihull.fr



GSM. +33 (0)6 51 81 96 33
Email: multihull@outlook.com
Site Web: www.multihull.fr



GSM. +33 (0)6 51 81 96 33
Email: multihull@outlook.com
Site Web: www.multihull.fr



GSM. +33 (0)6 51 81 96 33
Email: multihull@outlook.com
Site Web: www.multihull.fr



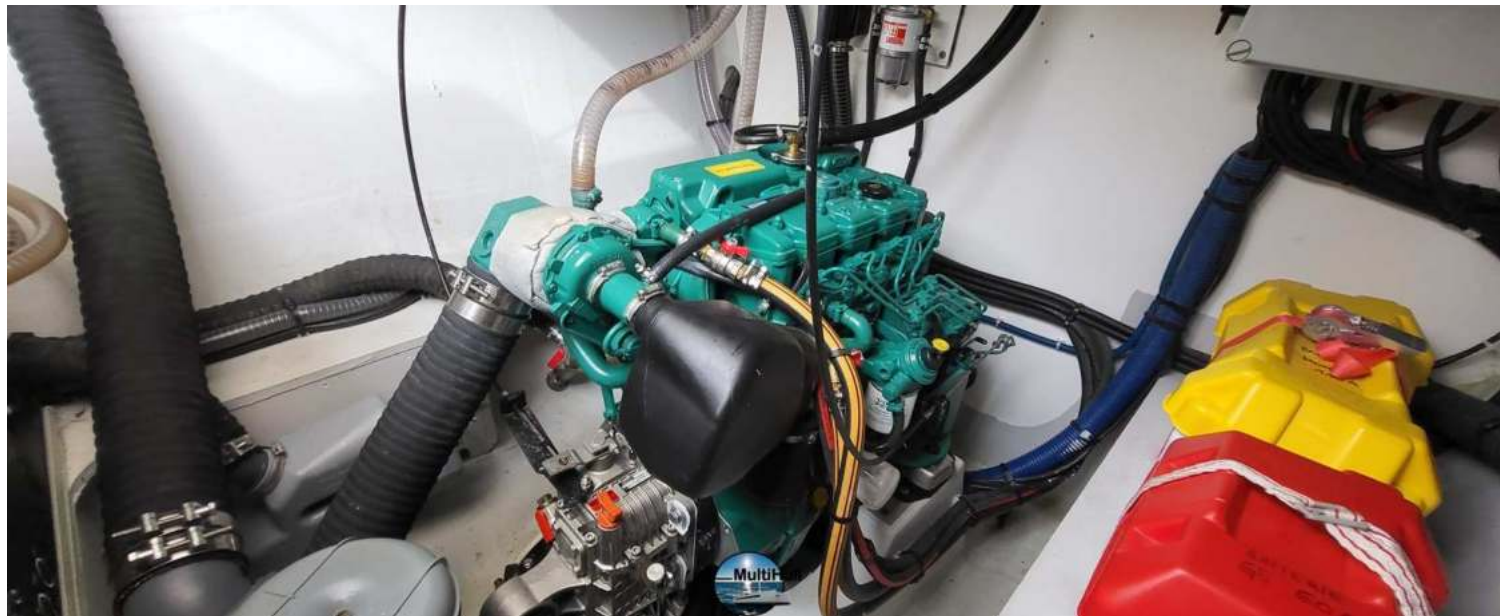
GSM. +33 (0)6 51 81 96 33
Email: multihull@outlook.com
Site Web: www.multihull.fr



GSM. +33 (0)6 51 81 96 33
Email: multihull@outlook.com
Site Web: www.multihull.fr



GSM. +33 (0)6 51 81 96 33
Email: multihull@outlook.com
Site Web: www.multihull.fr



GSM. +33 (0)6 51 81 96 33
Email: multihull@outlook.com
Site Web: www.multihull.fr